



**KRAMER ENGINEERING, P.A.**

CONSULTING ENGINEERS • SURVEYORS

2348 SW TOPEKA BLVD • TOPEKA, KANSAS 66611 • 785-234-6600 • FAX 785-234-6611

February 26, 2007

Mayor Dale White  
and The City Council  
City of Horton, Kansas  
205 E 8<sup>th</sup> Street  
Horton, Kansas 66439

Attn: Levi J. Henry, City Administrator

Dear City Officials:

We are very pleased to present herewith our qualifications for providing engineering services on Horton's street improvement and water main replacement project.

During the past 47 years Kramer Engineering, P.A. has successfully completed many street and water system projects. These projects have included removal and replacement of existing streets and design of new streets and improvements to existing and new water facilities, treatment plants, water distribution systems, and water storage tanks.

We have years of experience on projects funded with Community Development Block Grants, Rural Development, and Kansas Public Water Supply Loan Fund. Presently we are working on projects utilizing CDBG Funding, the Kansas Public Water Supply Loan Fund and Rural Development loans and grants.

We appreciate this opportunity to submit our qualifications and Kramer Engineering, P.A. looks forward to helping you on your street improvement and water main replacement project.

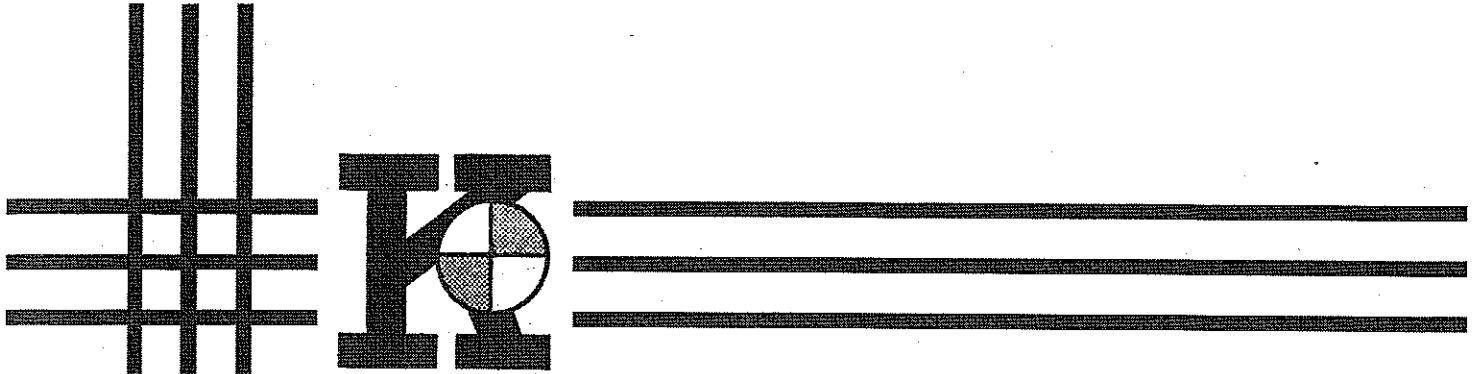
Sincerely,

KRAMER ENGINEERING, P.A.

John B. "Ben" Kramer, L.S.  
Project Manager

JBK/cs

Enclosure



**Proposal and  
Statement of Qualifications**

**Street Improvement  
and  
Water Main Replacement**

**February 23, 2007**

**City of Horton, Kansas**

**KRAMER ENGINEERING, P.A.**  
2348 SW Topeka Blvd.  
Topeka, Kansas 66611

## TABLE OF CONTENTS

	<u>Page No.</u>
Qualifications -	1 - 4
Introduction	
Commitment of Firm	
Response to Project Needs	
State and Federal Regulations	
Project Schedule	
Familiarity with Area	
Site Visit	
Proposed Project Schedule	5
Project Team and Resumes	6 - 11
Community Development Block Grant Experience	12 - 13
Experience & References on Street Projects	14 - 17
Experience & References on Water Projects	18 - 24
Additional References	25

## QUALIFICATIONS

### **INTRODUCTION**

- Kramer Engineering, P.A. is pleased to present our qualifications and references for providing engineering services to the City of Horton for street and water system improvements.

Our firm has provided quality engineering services required to successfully complete water, sewer, gas and street improvement projects for over 47 years. The firm is experienced in providing complete engineering services for analyses, reports, cost estimates, design, and construction engineering for water supply, treatment, distribution and storage. Our experience is demonstrated by the projects and information presented herewith.

Offices for the firm are located at 2348 SW Topeka Boulevard, Topeka, Kansas. Our business structure allows us the flexibility to meet the engineering needs of our clients with the minimum of lost time and overhead cost.

### **COMMITMENT OF FIRM**

- Kramer Engineering, P. A. is hereby certifying our commitment to provide all necessary staff and that we have the necessary equipment and facilities to provide the engineering analysis, evaluation of alternates, design and construction observation on your water system projects. We will commit the resources needed to keep the project on schedule.

### **RESPONSE TO PROJECT NEEDS**

- Kramer Engineering, P. A. believes, that in addition to our technical abilities, response to the client's and/or project's needs during the entire course of the project is one of our strongest points.

We would be available to meet with the City Council or Staff as required for meetings, daytime or evening hours. With Horton located less than one hour from our office, travel time to project site or to attend meetings would be a minimum.

**STATE AND FEDERAL - REGULATIONS** - Kramer Engineering, P. A. has worked on numerous water supply, treatment, distribution system and storage projects. The firm is familiar with state and federal regulations covering water projects.

Kramer Engineering, P.A. is an equal opportunity employer and complies with state and federal regulations.

**PROJECT SCHEDULE** - Our present work load would allow us to start work on this project almost immediately after authorization to proceed. We would continue to work on the project until it was completed in a timely manner.

**FAMILIARITY WITH AREA** - Kramer Engineering, P.A. is very familiar working with communities similar to the City of Horton. We have successfully completed projects in small communities throughout Kansas. In close proximity to Horton, we have completed projects with the Cities of Muscotah, Whiting, and Netawaka. Currently we working with the City of Effingham on a water supply, water storage, and water distribution project funded with a Community Development Block Grant and a State Revolving Fund loan.

**SITE VISIT -** On February 22, 2007, I (Ben Kramer) visited the site and discussed the City's Request for Qualifications.

Based on Kramer Engineering, P.A.'s experience with similar communities over the last 47 years, and our visit to Horton and information furnished by the City, Kramer Engineering, P.A. hereby assures you that we can provide the engineering studies, design, and construction engineering services required for your street and water system improvements.



Central Avenue to 10<sup>th</sup> Street looking north



East side of Central Avenue

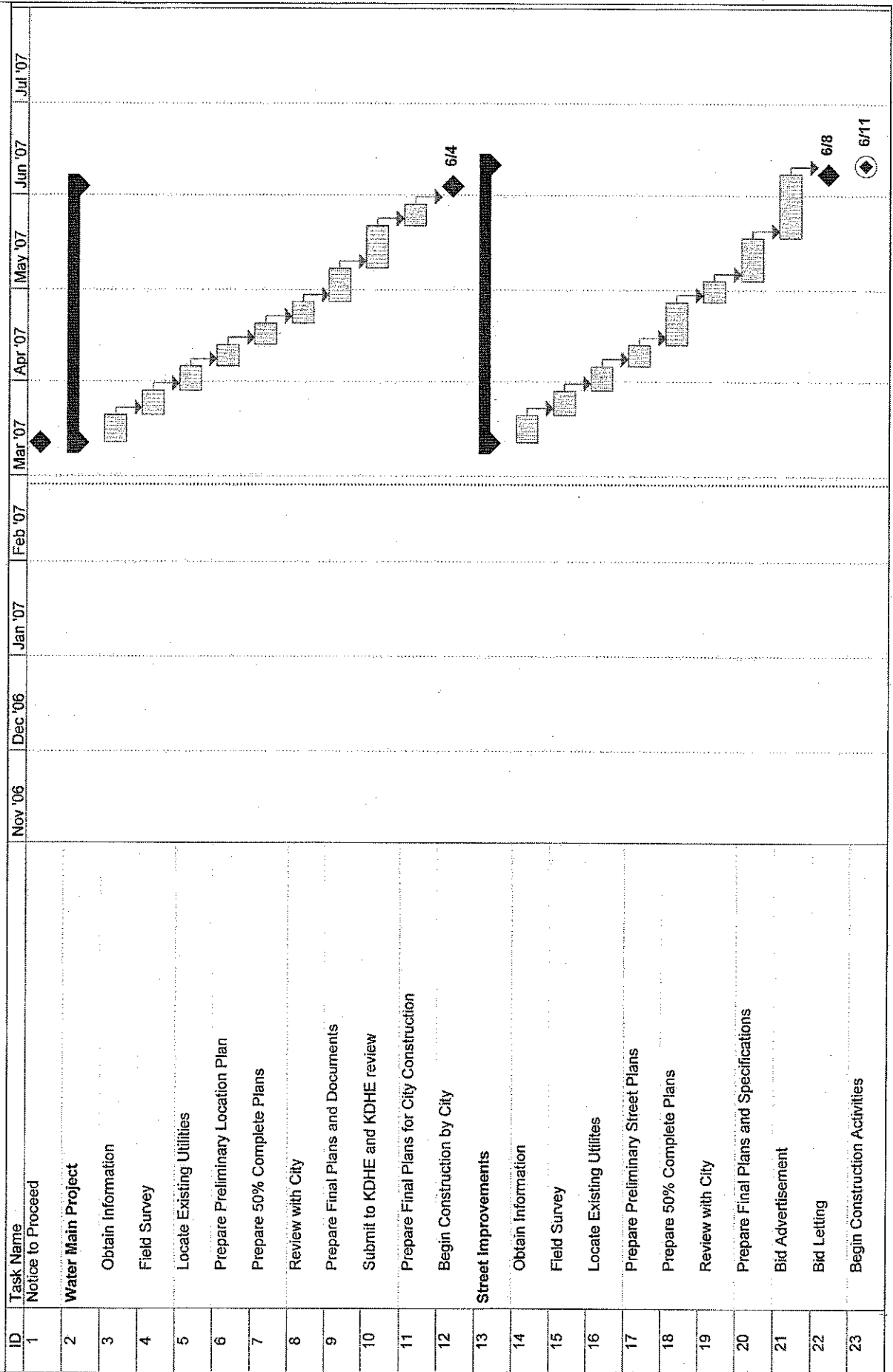


West side of Central Avenue north of 13<sup>th</sup> Street



Central and Highway 20 looking south

**Proposed Schedule: City of Horton, Kansas  
Street Improvements and Water Main Replacement**



## PROJECT TEAM and RESUMES

(Management and Technical Staff)

### PROJECT TEAM

- Michael Kramer, P.E. - Principal of Firm will supervise and coordinate work on the project, prepare plans and specifications, and City's professional representative.
- John B. "Ben" Kramer, L.S. - Project Manager, supervise and coordinate engineering design, prepare costs analysis, and monitor construction activities.
- Cara C. Hendricks, P.E. - Project Engineer will perform engineering work on the project and will coordinate computer aided data collection and engineering calculations.
- Joe Bowen, L.S. - Field Crew Chief in charge of gathering field information and site survey data.
- Gerald O'Flaherty, E.T. - Engineering Technician, will help gather field information and computer aided drafting

Other firm members will work with project team as required to help obtain field information, prepare plans and specifications, quality control, bid project and check construction.

## **MICHAEL E. KRAMER, P.E.**

Engineer  
Project Manager

### Education:

B. S. Civil Engineering, University of Kansas, December 1990  
Graduate work, University of Kansas

### Licensure and Certification:

Registered Engineer, State of Kansas

### Professional Memberships:

American Society of Engineering Management  
American Society of Civil Engineers

### Experience:

Kramer Engineering, P.A., Topeka, KS, February 1993 to present: Professional experience as a project manager encompassed a diverse range of projects and responsibilities. Technical experience includes water usage studies, water distribution system analysis and design, drainage reports, hydrologic and hydraulic analysis, reservoir routing, local roadway alignment and design. Management experience has included contract negotiations, project management, office management, and public presentations of reports and designs.

#### Representative Clients and Projects:

Kansas Rural Water Districts – Analysis and Design of Water Distribution Systems.  
Suburban Water Company, Leavenworth County – Consulting and Mapping District.  
Richard Perky Development – Shawnee County Benefit Street and Sewer Districts.

Howard Needles Tammen and Bergendoff, Inc. (HNTB), K.C., MO, January 1991 to February 1993. Professional responsibilities in the environmental section included providing engineering analysis and design for storm drainage, hydrologic/hydraulic design of major highway stream crossings, highway and airport storm drainage, reservoir routing, field inspection of drainage structures, scour analysis of major highway stream crossings, and engineering reports.

#### Representative Clients and Projects:

Kansas Turnpike Authority – Bridge Scour Report of 10 major stream crossings.  
MoDOT – Storm Drainage for Bruce R. Watkins Drive.  
Northeast Ohio Regional Sewer District – Lake View Cemetery Dam, Hillside and Stream Rehabilitation.

**JOHN B. "BEN" KRAMER, L.S.**

Project Manager

Education:

Washburn University, (Pre-Engineering)  
Kansas College of Technology, 1991,  
L.P.A. Training Course, KDOT Level AI, BI, CPI

Licensure: Registered Land Surveyor, State of Kansas

Experience:

1983 to Present: Kramer Engineering, P.A., Project Manager, Engineering Technician, Survey Work and Construction Observer. Ben has worked as instrument man and survey crew party chief on construction layout, property surveys and site surveys. Experience includes preliminary and final design engineering, calculation of quantities, cost estimates, and plan preparation.

Also, Ben has managed numerous projects involving the design of streets, storm sewers, sewers, water systems, water main extensions, main relocation, water treatment plants and wastewater treatment facilities. Work involved engineering calculations, preliminary layouts, final design, hydraulic analysis, cost estimates, and construction observation.

Representative projects Ben has been involved with include the following:

- City of Lebo - Street design, water mains, sanitary sewer rehabilitation, wastewater lagoon desludging
- City of Topeka - Various red water replacement projects, water main and capital improvements projects
- City of Effingham - Wastewater lagoon improvements and desludging
- Shawnee County - Street and sanitary sewer improvement projects
- Crawford County - Sewer District No. 2 and No. 4, City of Capaldo
- City of Sedan - Sanitary Sewer Improvement projects, Klink resurfacing project
- City of Quenemo - Wastewater improvement project, lagoons and sanitary sewer rehabilitation
- Lawrence Paper Company - Water, sewer, pump station and drainage system to serve Perry Industrial Site, including designs, plan preparation and resident project representative

Ben's 25+ years working in engineering and construction has given him valuable experience in dealing with contractors, citizens, public officials and regulatory agencies.

**CARA C. HENDRICKS, P.E.**

Project Engineer

Education:

B. S. Civil Engineering, Washington University, St. Louis                      May 1999

Licensure and Certification:

Registered Engineer, State of Kansas

Experience:

October 2000 to Present: Kramer Engineering, P.A., Project Engineer

Technical experience includes water usage studies, water distribution system analysis and design, storm drainage design, sanitary sewer design, street design and Computer Aided Drawings (CAD) of surveys and site plans. Versed in various computer modeling programs for hydrologic and hydraulic analysis.

A representative list of projects on which Cara worked as a project engineer is as follows:

Map update, hydraulic analysis of existing water distribution system and recommendations for improvements for several rural water districts in Kansas.

City of Strong City, Kansas - Hydraulic analysis of water distribution system and proposal for improvements.

City of Lebo, Kansas – Biosolids removal and disposal from City’s wastewater lagoon site and sewer line cleaning and T.V. inspection of City’s sanitary sewer system

Cherry Creek North Subdivision, Shawnee County, Kansas – Sanitary sewer, storm sewer and street layout and design

Jefferson County Sewer District No. 12; Crawford County Sewer District No. 4 – Low-pressure sewer system layout with sewage grinder pumps to serve individual lots, and new wastewater treatment facilities.

June 1999 to September 2000: J.S. Alberici Construction Co., St. Louis, MO, Project Engineer

**JOSEPH L. BOWEN, L.S.**

Field Crew Chief

Education:

High School Graduate

Kaw Area Vocational Technical School

Licensure:

Registered Land Surveyor, State of Kansas

Memberships:

Kansas Society of Land Surveyors

Experience:

October 1988 to Present:

Kramer Engineering, P.A., Survey party chief, obtain field information for street, sewer, water, and gas projects, property and subdivision surveys and construction stakeout. Representative field work includes City of Topeka street, sewers and water projects, Effingham sewer system, Eskridge street, sewer, gas, and water projects.

May 1985 to October 1988: CP Engineers & Land Surveyors, instrument-man and then survey party chief. Worked on numerous property surveys, obtained field data for topographic maps, right-of-way surveys for bridges, surveys and construction stakeout for several highway projects and utility systems.

September 1984 to May 1985: Frito Lay Corporation

February 1978 to August 1984: Cook, Flatt & Strobel Engineers, survey crew member and instrument-man. Worked on field survey crew obtaining information for design projects, construction staking, and property surveys.

**GERALD A. O'FLAHERTY, E.T.**

Engineering Technician  
Design Drafting and Surveying  
Construction Inspector, KDOT Level IIAC

Education:

High School Graduate  
Kaw Area Vocational Technical School  
2 years Civil Engineering Technology  
Kansas College of Technology, 1990,  
L.P.A. Training Course, KDOT Level AI, BI, CPI

Experience:

March 1985 to Present: Kramer Engineering, P.A., Design Draftsman, Survey Crew work and Resident Inspector.

Gerald has worked on the field crew gathering information for gas, water, street and sewer projects. Field work has also included doing property surveys, site surveys and construction stakeout. Drafting experience has been in the drawing of gas, sewer, water line and water treatment plant projects and "As-Constructed" drawings of completed projects.

A representative list of projects for which Gerald worked on as design draftsman and was the resident project representative are as follows:

RWD No. 2 Consolidated - New Water Storage Facility.

City of Osage City - Water Main Replacement 1993 and 1995 projects.  
New two million gallons per day water treatment plant.  
25.6 acre wastewater treatment lagoons, interceptor  
sewer and pump station.  
Gas main replacement project.

RWD No. 13, Jefferson - Water Treatment Plant Expansion

March 1980 to January 1985: Davis Electrical Construction, Burlington, Kansas, Electrical Construction.

January 1978 to February 1980: Daniel International, Burlington, Kansas, Surveyor and Field Engineer.

## COMMUNITY DEVELOPMENT BLOCK GRANT EXPERIENCE

The staff of Kramer Engineering, P.A. knows Community Development Block Grant (CDBG) compliance items, contract requirements and personnel at the agencies handling these funding sources. On most of our projects we complete grant applications for funding by CDBG.

Our firm has completed over 50 CDBG projects. Several of our projects are funded with CDBG funds as well as Rural Development and SRF Loan funding. We often work with projects using a combination of funding methods.

Kramer Engineering, P.A. has provided engineering services for the following CDBG projects:

<u>Date</u>	<u>CDBG Recipient</u>	<u>Project</u>
1976	City of Treece	Sewer and Water Systems
1981-82	City of Osage City	Sewer and Water Projects
1983	City of Buffalo	Standpipe
1983	City of Arcadia	Well and Water Treatment Plant
1984	City of Arcadia	Water Lines, Standpipe and Street Repairs
1984	City of Osage City	Economic Development – Street, Storm Drainage, Sewer, Water and Gas Mains
1984	City of Altoona	Water Line Improvements
1984	City of Elk City	Water Line Improvements
1984	City of Mayetta	Water Lines and Standpipe
1984	City of Lebo	Gas Main Replacement
1985	City of Denison	Water Lines and Standpipe
1985	City of Osage City	Sewer Main Replacement
1986	City of Osage City	Wastewater Treatment Facilities, Interceptor Sewer and Collection System Improvements
1986	City of Richmond	Street Improvements
1986	City of LaHarpe	Water Line Improvements
1986	City of Colony	Wastewater Lagoons and Outfall Line
1987	City of Cottonwood Falls	Street Improvements
1988	City of Muscotah	Wastewater Collection System and Treatment Facilities
1988	City of Mulberry	Water Distribution System Improvements
1989	City of LaCygne	Street Improvements
1989	City of Lane	Water Distribution System Improvements and Water Tower Painting
1989	City of Osage City	Gas Main Replacement
1990	City of Winchester	Water Supply Improvements
1990	City of Whiting	Water Distribution System Improvements
1990	City of Osage City	Gas Main Replacement

<u>Date</u>	<u>CDBG Recipient</u>	<u>Project</u>
1991	City of Denison	Storm Sewer Improvements
1991	Jefferson County	Public Health Building
1991	City of Mulberry	Wastewater Collection System and Treatment Facilities
1992	City of Cedar Vale	Water Supply and Treatment Improvements
1992	City of Osage City	Water Main Replacement
1992	City of Sedan	Wastewater Treatment Facilities
1993	City of Osage City	Water Main Replacement
1994	City of Arcadia	Wastewater System Improvements
1995	City of Osage City	Water Line Cleaning
1995	City of LaCygne	Water Main Replacement
1995	Crawford County	Sewer District No. 1
1997	Crawford County	Sewer District No. 2
1997	City of LaHarpe	Wastewater Improvements
1997	City of Quenemo	Wastewater Improvements
1998	Crawford County	Sewer District No. 4
1998	City of Effingham	Wastewater Improvements
1998	City of LeCompton	Wastewater Improvements
1998	City of Sedan	Wastewater Improvements
1999	Crawford County	Sewer District No. 6
1999	City of Strong City	Wastewater Improvements
1999	City of Mankato	Wastewater Improvements
1999	City of Eskridge	Gas Transmission Line
2000	City of Wilsey	Water Distribution System
2000	City of Quenemo	Wastewater Line Improvements
2000	City of Frontenac	Water Line Improvements
2001	City of Eskridge	Gas Transmission Line, Phase II
2002	City of Eskridge	Street Project
2002	City of Osage City	Water Line Improvements
2002	City of Strong City	Water Line Improvements
2002	City of Effingham	Wastewater Improvements
2003	Crawford County	Sewer District No. 5
2006	City of Easton	Wastewater Improvements
2006	City of Lane	Water System Improvements

## EXPERIENCE AND REFERENCES ON STREET PROJECTS

Kramer Engineering, P.A. has extensive experience in providing engineering services on street improvement projects similar to Horton's street project. Our experience includes providing engineering services for the replacement of a few blocks of existing street to construction of new streets.

### **Some Recent Street Projects**

With  
Scope and Services Provided

and  
Street Projects List

For Which

**KRAMER ENGINEERING, P.A.**

Furnished  
Complete Engineering Services

**PAST EXPERIENCE ON STREET PROJECTS**

The following is a representative sample of some recent street projects for which Kramer Engineering, P.A. provided engineering services:

**Shawnee County Benefit Street District  
Cherry Creek North Subdivision, Phase III**

Services furnished: engineering design and construction stakeout

1,690 L.F. of new asphalt street, concrete curb and gutters, storm sewers and appurtenances.  
Under construction

Construction Contract: \$371,717

**Shawnee County Benefit Street District  
Cherry Creek North Subdivision, Phase II**

Services furnished: engineering design, inspection and construction stakeout

1,340 L.F. of new asphalt street, concrete curb and gutters, storm sewers and appurtenances,  
completed 2005.

Contract Amount: \$231,083

**Shawnee County Benefit Street District  
Cherry Creek North Subdivision, Phase I**

Services furnished: engineering design, inspection and construction stakeout

1,422 L.F. of new asphalt street, concrete curb and gutters, storm sewers and appurtenances,  
completed 2003.

Contract Amount: \$263,872

**City of Eskridge  
2002 CDBG Housing and Neighborhood Improvement, Street Project**

Services furnished: engineering design, inspection and construction stakeout.

12,980 L.F. street improvements, including asphalt overlay, bituminous seal coat, concrete,  
curb and gutter, completed 2003.

Contract Amount: \$222,554

**City of Lebo**  
**1999 CDBG Housing and Neighborhood Improvement, Street Project**

Services furnished: engineering design, inspection and construction stakeout

10,100 L.F. of street rebuilding, new ditches, asphalt surface, some asphalt overlay, new culverts and appurtenant work, completed 2001.

Contract Amount:           \$277,656

**City of Osage City**  
**KLINK Resurfacing Project on K-31 Highway, 4<sup>th</sup> to 7<sup>th</sup> Streets**

Services furnished: engineering design and construction inspection

1,620 L.F. of asphalt milling, geotechnical fabric installation and asphalt overlay, pavement marking and appurtenant work, completed 2001.

Contract Amount:           \$89,127.75

**City of Osage City**  
**Geometric Improvements Project on K-31 Highway, 7<sup>th</sup> Street East**

Services furnished: engineering design

2,480 L.F. of replacement of existing highway with new storm sewers, concrete curb and gutters, asphalt base and surface, and appurtenant work, completed 2001.

Construction Contract:   \*\$1,200,000 ±

\*We were design engineers only and do not have final cost.

Kramer Engineering, P.A. has provided engineering services for the following street projects:

<u>Completion Date</u>	<u>Owner</u>	<u>Project</u>
1966 – 1969	City of Ozawkie	Grading and Street Surfacing
1971 – 1975	Shawnee County	Shawnee Meadows South, Streets
1973	City of LeRoy	Grading and Street Surfacing
1974	City of Topeka	37 <sup>th</sup> Street Project
1974	Larry Luttjohann	Indian Hills Shopping Center Parking
1978	City of Carbondale	Grading and Street Surfacing
1978	Shawnee County	North Valley Farms Streets
1979 – 1983	Shawnee County	Lakewood Estates Streets

<u>Completion Date</u>	<u>Owner</u>	<u>Project</u>
1982	Northern Christian Church	Parking Lot
1985	City of Osage City	Street and Storm Drainage, Marley Drive
1986	YWCA of Topeka	Parking Lot
1987	City of Richmond	Street Improvements
1988	City of Cottonwood Falls	Street Improvements
1991	City of Topeka	Street Improvement No. 60486
1994	Shawnee County	Streets Gardner Subdivision
1994	Shawnee County	Streets Shawnee Gardens Subdivision Phase I
1997	Shawnee County	County Streets Shawnee Gardens Subdivision, Phase II
1997	Shawnee County	Streets Murray Subdivision No. 5
1999	Shawnee County	County Streets Shawnee Gardens Subdivision, Phase III
1999	Shawnee County	Streets Murray Subdivision No. 5 Phase II
2000	City of Lebo	Street Improvements
2001	City of Osage City	KDOT Geometric Improvements
2001	City of Osage City	KLINK Highway Project
2001	City of Waverly	KLINK Highway Project
2001	Shawnee County	Streets Murray Subdivision No. 5 Phase III
2002	City of Eskridge	2002 CDBG Street Project
2002	City of Perry	Five Year Street Plan
2002	City of Sedan	KLINK Highway Project
2002	Shawnee County	Cherry Creek North Subdivision, Phase I
2003	City of Topeka	Woodglen Subdivision, Phase I
2003	Shawnee County	Cherry Creek North Subdivision, Phase II
2005	Shawnee County	Cherry Creek North Subdivision, Phase III
2005	City of Topeka	Woodglen Subdivision, Phase II
2006	Shawnee County	Cherry Creek North Subdivision, Phase IV

In addition to the above project, numerous subdivision street projects, storm sewers and drainage ways have been engineered by Kramer Engineering, P.A.

## **EXPERIENCE AND REFERENCES ON WATER PROJECTS**

Kramer Engineering, P.A. has extensive experience in providing engineering services on water system improvement projects similar to Horton's water system project. Our experience includes providing engineering services for the replacement of a few blocks of water line to complete new water systems, water supplies, treatment facilities, water distribution systems and water storage facilities.

### **Some Recent and Current Water Projects**

With  
Scope and Contact Person

and  
Water Projects List

For Which

**KRAMER ENGINEERING, P.A.**

Furnished  
Complete Engineering Services

## Suburban Water Company

Engineering Report – Water Supply, Water Distribution System and Water Storage Facility

District Data: 828 users, 115 miles of pipe, 1 standpipes,  
7 existing wells

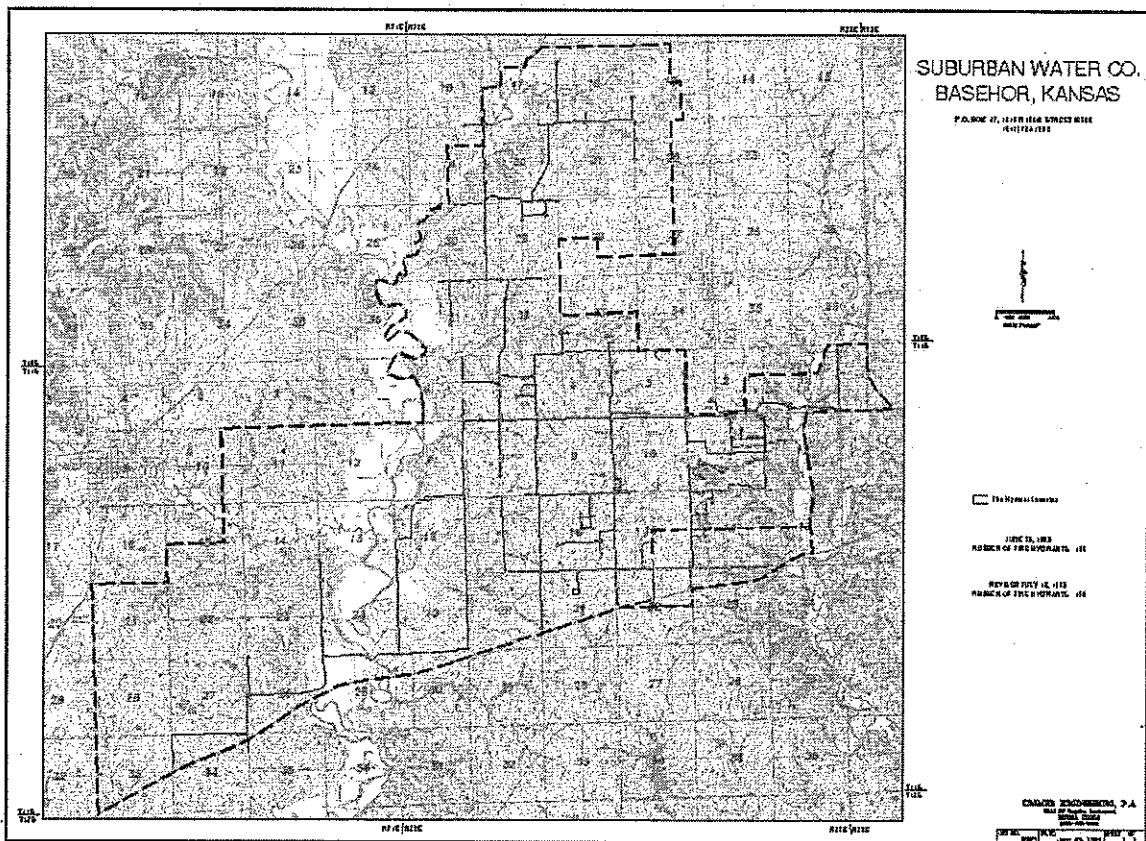
Completed 1999

1. Prepare layout maps of District showing water lines, users, storage and pumping stations
2. Review Historical water use data and determine peak usage
3. Project future water needs for district
4. Perform a time simulated hydraulic analysis of water system
5. Prepare report on hydraulic study, recommendations for improvements for water storage, distribution system, and water supply

### References:

Ray Breuer, President

(913) 724-1800



## RWD NO. 8, OSAGE COUNTY, KANSAS

### Hydraulic Analysis

District Data: 1,055 users, 341 miles of pipe, 6 standpipes,  
high service pump and 3 booster pumps

Completed 1990 and Updated Each Year Through 1997

1. Prepare layout maps of District showing water lines, users, storage and pumping stations
2. Measure actual instantaneous water use during peak use period
3. Perform hydraulic analysis of water system with booster pumps on and also with pumps off
4. Prepare report on hydraulic study, recommendations for improvements and review with District

#### References:

Tonya Bevitt, Business Manager

(785-654-3711)

## CITY OF TOPEKA

### Water Main Replacement Projects

1988 through 2004

Work on Topeka projects to eliminate red water problems has consisted of providing engineering design services for several waterworks improvement projects through the years 1988 to our present 2004 project. These projects have included the replacement of over 107,508 feet (20.4 miles) of 4" through 12" water mains, services connections, main connections, valves, hydrants, street repair and associated work. Projects have been in the developed areas of the City and involved coordination to locate new lines without disrupting service to existing users and to miss existing utilities, trees, etc.

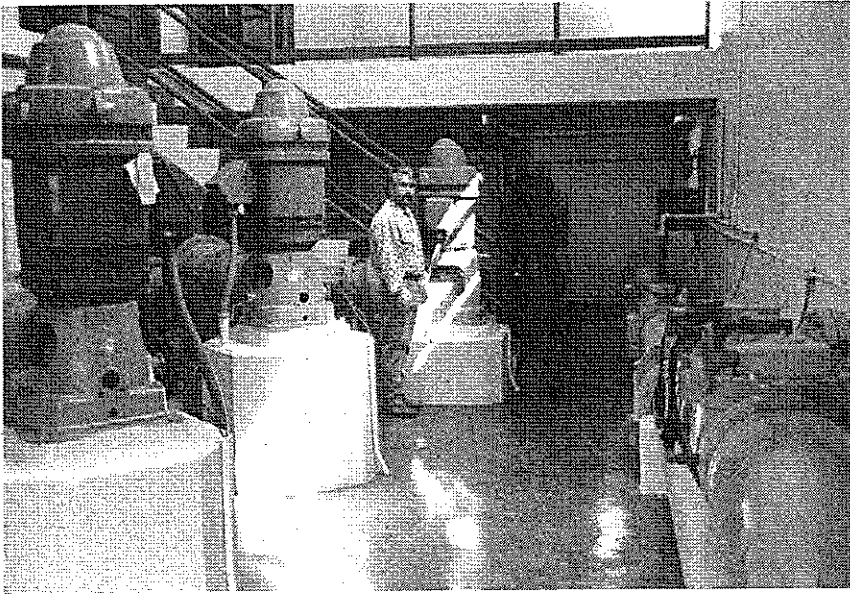
## CITY OF OSAGE CITY

### Water System Improvements

Construction Cost - \$265,500

Completion Date - 1995

1. 12,478 feet of 6" and 8" PVC plastic pipe main line
2. 20 gate valves, 12 fire hydrants, 76 services with meters
3. 15 main line connections
4. Bored highway and railroad crossings



### Water Treatment Plant

Construction Cost - \$1,380,000

Completion Date - 1988

1. 1,400 gpm pumps with 150 horsepower submersible motors in Melvern Reservoir
2. Rapid mix basins, new upflow basin and connections to existing upflow basin
3. Chlorine contact basin, new chemical feeders and feed system
4. Filter building filters, high service pumps, chemical feed rooms, office, plant controls and laboratory
5. Clearwell with capacity of 200,000 gallons
6. Two sludge lagoons for storage of backwash water

### References:

Mike Gilliland, Utility Superintendent

(785-528-4124)

Linda Jones, City Clerk

(785-528-3714)

## CITY OF LEBO

### Water Distribution System Improvements

Construction Cost - \$370,600

Completion Date - 1992

1. 43,055 feet of 2" through 6" PVC plastic pipe main line
2. 13,698 feet of 3/4" through 2" copper service line
3. 43,055 feet of tracer wire
4. 66 gate valves, 2" through 6"
5. 15 fire hydrants and 12 flush hydrants
6. 56 connections to existing main
7. 300 service line connections
8. 331 water meters, 5/8" x 3/4" through 1 1/2", with boxes and setters
9. Bored railroad and County road crossings
10. Sewer line crossings, pavement removal and replacement and appurtenant work

#### References:

Carrie Sloan, City Clerk

(316-256-6622)

## CITY OF MULBERRY

### New Water Distribution System

Construction Cost - \$298,000

Completion Date - 1990

1. 40,150 feet of 2" through 8" PVC plastic pipe main line
2. 6,900 feet of 1" PVC plastic pipe service line
3. 41 gate valves
4. 26 fire hydrants and valves
5. 276 service line connections
6. 760 S.Y. pavement removed and replaced
7. 2,080 S.F. of concrete sidewalk

#### References:

Janice Gilbert, City Clerk

(316-764-3315)

## WATER PROJECTS

1990 to Present

Partial Listing

<u>Type of Project</u>	<u>Firm Service</u>	<u>Completed</u>	<u>Owner</u>
Water Main Replacement	Design Engineering	1990	City of LaCygne, Kansas
Water Distribution System Improvements	Design Engineering	1990	City of Lane, Kansas
Water System Improvements	Design Engineering, Const. Observation	1992	City of Whiting, Kansas
Water Treatment Plant Improvement	Design Engineering, Const. Observation	1992	City of Sedan, Kansas
Softening Improvements Water Treatment Plant	Design Engineering, Const. Observation	1992	City of Strong City, Kansas
Water Distribution System Improvements	Design Engineering, Const. Observation	1992	City of Lebo, Kansas
Water Main Replacement	Design Engineering, Const. Observation	1993	City of Osage City, Kansas
Water Supply Improvements	Design Engineering, Const. Observation	1993	City of Winchester, Kansas
Waterworks Improvements	Design Engineering	1988-1997	City of Topeka, Kansas
Water Main Replacement	Design Engineering, Const. Observation	1994	City of Osage City, Kansas
Water Supply and Treatment Improvements	Design Engineering, Const. Observation	1995	City of Cedar Vale, Kansas
Water Distribution System Improvements	Design Engineering, Const. Observation	1995	RWD No. 2 Jefferson County

<u>Type of Project</u>	<u>Firm Service</u>	<u>Completed</u>	<u>Owner</u>
Water Line Cleaning	Design Engineering, Const. Observation	1996	City of Osage City, Kansas
Water Distribution System Improvements	Design Engineering, Const. Observation	1996	RWD No. 13 Jefferson County
Water Supply Line	Design Engineering, Const. Observation	1996	City of LaCygne, Kansas
Water Distribution System Improvements	Design Engineering, Const. Observation	1996	RWD No. 8 Osage County
250,000 Gallon Elevated Water Storage Tank	Design Engineering, Const. Observation	1997	RWD No. 13 Jefferson County
Water Line and Tower	Design Engineering	Est. 1999	Shawnee Co. Cons. RWD No. 2
250,000 Gallon Elevated Water Storage Tank	Design Engineering, Const. Observation	1998	RWD No. 3 Jefferson County
Water Treatment Plant Improvements	Design Engineering Const. Observation	1999	RWD No. 13 Jefferson County
Water Line Improvements	Design Engineering Const. Observation	2004	City of Osage City, Kansas
Water Line Improvements	Design Engineering Const. Observation	2004	City of Strong City, Kansas
Water Storage, Treatment And Distribution System	Design Engineering Const. Observation	2005	City of Wilsey, Kansas
Water Treatment Plant Improvements	Design Engineering Const. Observation	2005	RWD No. 3, Osage County
Water Line Improvements	Design Engineering Const. Observation	2006	City of Waverly, Kansas

In addition to above projects, several water line extensions, improvements to water treatment plants, storage reservoirs and booster stations have also been engineered by Kramer Engineering, P.A.

ADDITIONAL REFERENCES

KDHE:

Rod Geisler, P.E., Chief, (785-296-5527)  
Municipal Programs Section, Bureau of Water Protection  
Rance Walker, Engineer (785-296-5527)  
Municipal Programs Section, Bureau of Water Protection

KDOC:

Debbie Beck, CDBG Economic Development Specialist (785) 296-7092

RD:

Gary Smith, Director (785-271-2730)  
Randy Stone, State Engineer (785-271-2730)  
Dale Yager, Specialist (316-365-2901)

KRWA:

Jim Jackson, Source Water Tech (785-336-3760)

CLIENTS:

City of Topeka

Ken Bass, Project Engineer  
(785) 295-3842

City of Eskridge

Rex Kraus, Mayor  
(785) 449-2621

City of Easton

Lynn Poff, City Clerk  
(913) 733-8146

City of Perry

Pete McCarty, City Utilities  
Vicki Harrell, City Clerk  
(785) 597-5613

City of Effingham

James Pott, Mayor  
Patricia Strine, City Clerk  
(913) 833-4471

Shawnee County

Frank Weinhold, Project Engineer  
(785) 233-7702

City of Lebo

Carrie Sloan, City Clerk  
(316) 256-6622

RWD No. 10, Leavenworth County

Shirley Davidson, Manager  
(913) 723-3259

Crawford County

Jim Emerson, County Counselor, (620) 724-6390  
Tom Ragonese, Project Manager, (620) 724-6664